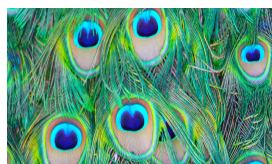


Statement Scarves

**WEARING YOUR
VOICE OUT ON
YOUR SLEEVE**



PEACOCK TAIL
HUNTINGTON
LIBRARY

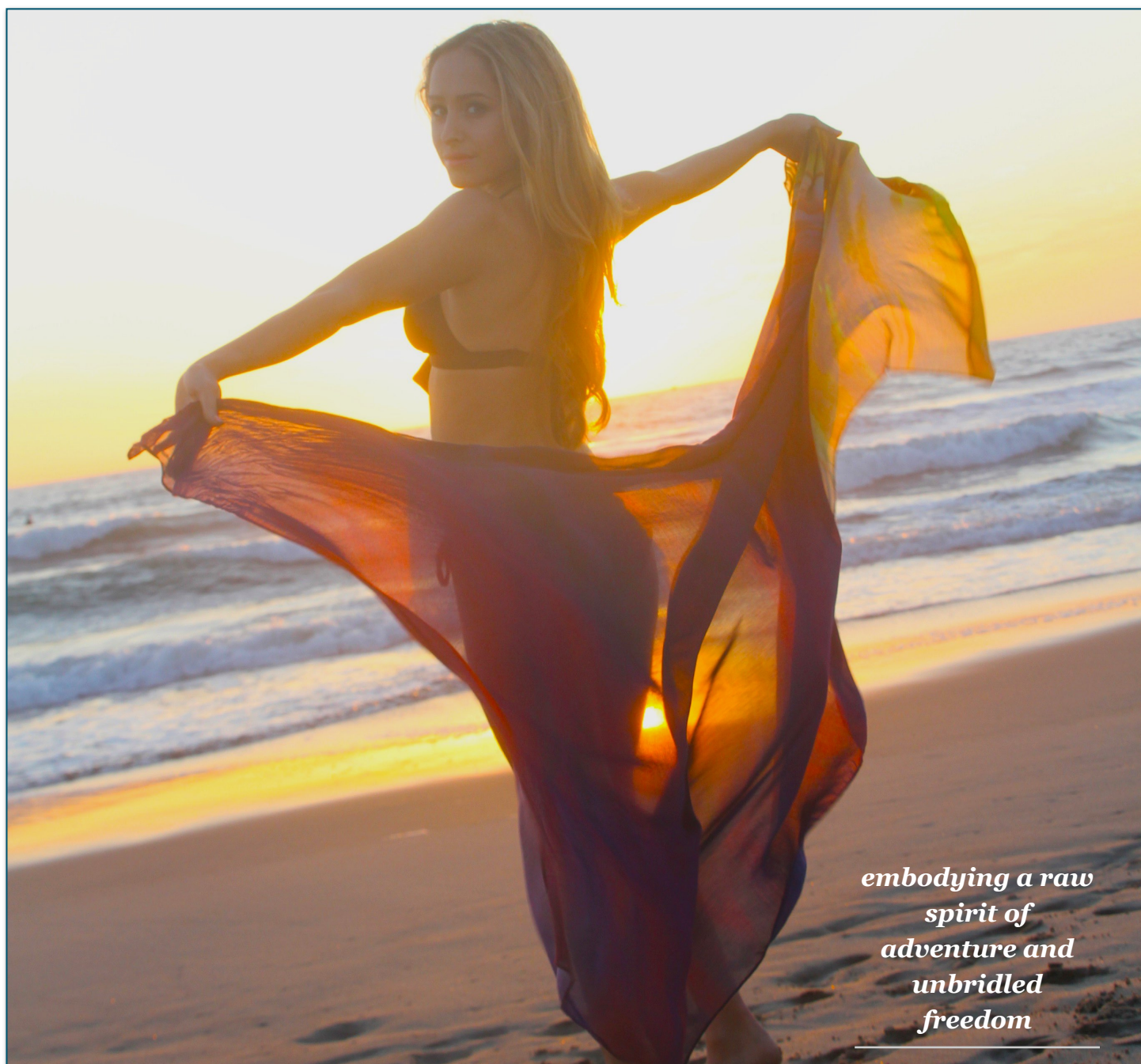


**CINDY CRAWFORD IN
ROSES RED**
BOOK SIGNING AT



**RAINBOW OVER
KAANAPALI**
MAUI CHANNEL

ART PORTABLE



*embodying a raw
spirit of
adventure and
unbridled
freedom*

Lysa Nalin ~ Los Angeles

Lysa Nalin is an American art photographer from Los Angeles, California

whose work conjures a rare sense of the infinite power of nature; serenity driven by the beauty of varied landscapes often overlooked.

For the past three intense and prolific years, Nalin embarked on what she refers to as “Photo Safaris”,

traveling with her camera to locations throughout Southern California,

embodying a raw spirit of adventure and unbridled freedom known best perhaps

to only those who can legitimately claim status as a California native.

The results of her Photo Safaris efforts display an art form of scenic photography vision that is both graceful and affecting, incorporating iconic SoCal imagery alongside the kind of locations one could only find - or notice - after a lifetime of evolving her creative spirit in ;the city itself.

In keeping with her spirit of adventure and sense of constant movement,

her preferred medium aims neither for the large gelatin print nor the gallery frame but back into the environments that are her subjects by printing her artwork onto

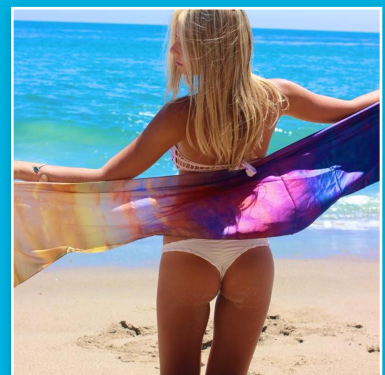
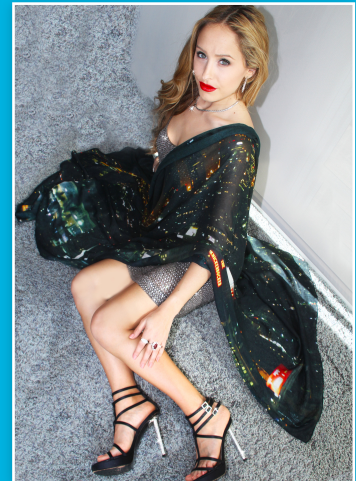
luxurious silk or cotton, creating exquisite scarves that serve as “wearable art,” or as her customers in France refer to it, “Art portable”

Nalin’s colorful, bold creations have caught the eye of celebrities and their stylists, and have already been selected by the Getty, Huntington Library and Contemporary Art Museum to be featured and sold.

With a soft hand of voile cotton and silk ~scarves can be worn as sarongs, wraps and bathing suit cover- ups.

Purchase them at www.LysaNalin.com

“I wanted to create sentimental treasures for people to collect on their adventures to cherish”



The results of her Photo Safari efforts display an art form of scenic photography vision



Background Check ~ about the artist

Shortly after graduating from the University of Southern California, Lysa Nalin's career as an artist evolved behind the camera from working on a range of high end productions throughout Hollywood, that would lead her to develop her skills as a shooter, editor, and producer, creating

iconic imagery:

Her work with the famous celebrity Photographer Harry Langdon helped to develop her winning approach to producing with legendary subjects, both in front of and behind the scenes, driving the upper echelon of Hollywood, towards stunning portraits of such luminaries as James Cameron, Jodi Foster, Rob Reiner, Ray Romano, Brian Wilson, Sofia Vergara, Nick Nolte, LL Cool J, Donna Summer, Harvey Weinstein, Chloe Sevigny Amy Poehler as well as TV Icons from the seventies and Hollywood royalty.